

# Co-existence of biodiversity in “Chagusaba” and traditional farming technique we should succeed to produce high quality tea

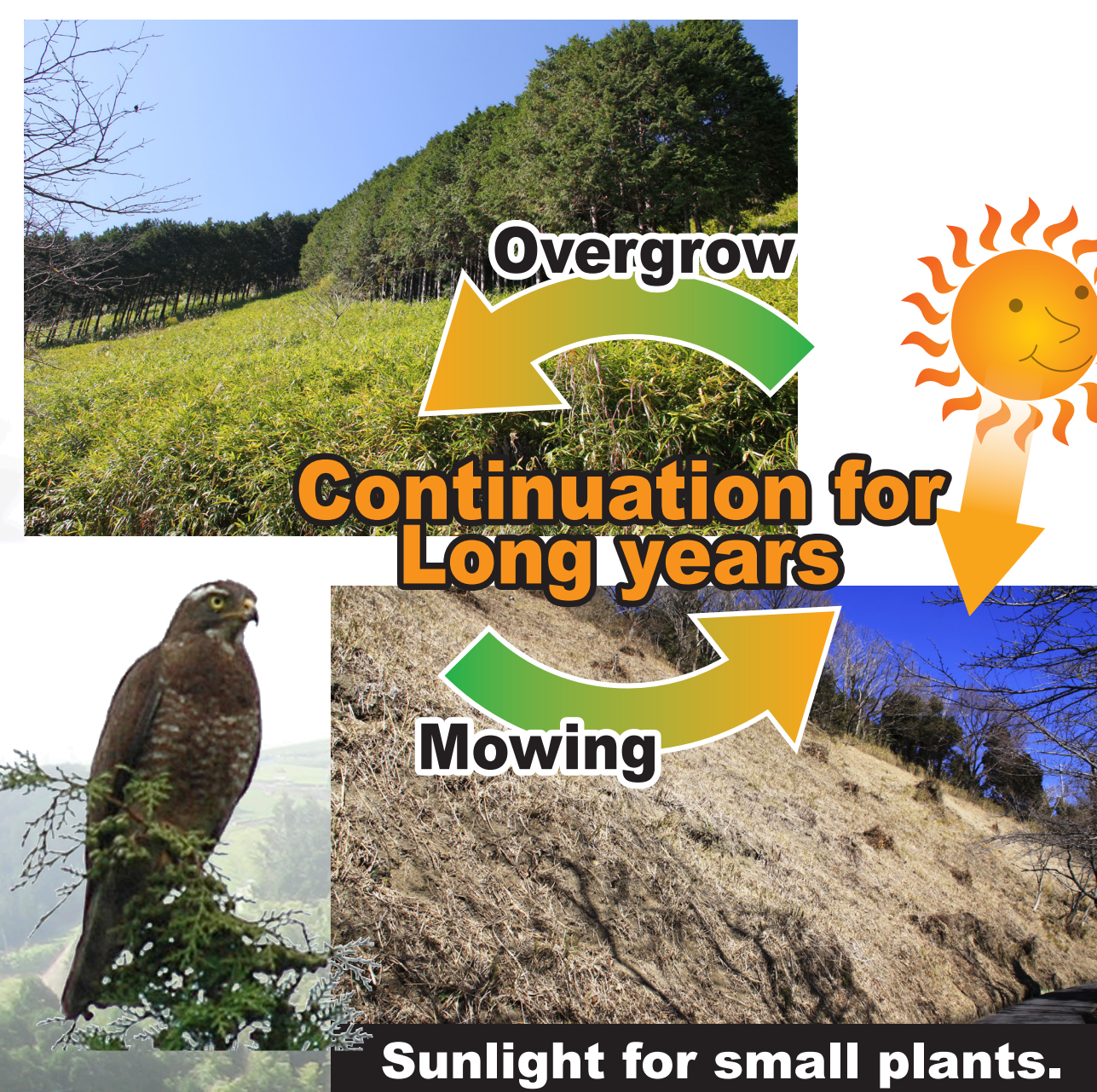
“Chagusaba” is semi-natural grassland where farmers mow grass for tea field. The positive use of grass like that, maintain “Chagusaba” near tea field. We can see many grassland species including rare plants very closely. In proposal site Shizuoka, traditional farming method ( mow grass of “Chagusaba” and add the grass to tea field) has been succeeded. Succeeding this technique maintains “Chagusaba” near closely to tea field. The Chagusaba is very rare example farming activity and biodiversity are co-existence.

**letter as symbol of tea farmers**  
Gigantic “茶” letter ( over 100m×100m) is formed on the slope of Awagatake Mountain. In 1932, farmers in Higashiyama region planted pines and formed the letter to appeal their willingness for tea farming. Now, the letter is made of hinoki.

## Traditional semi-natural grassland maintained by tea farming

# SHIZUOKA CHAGUSABA

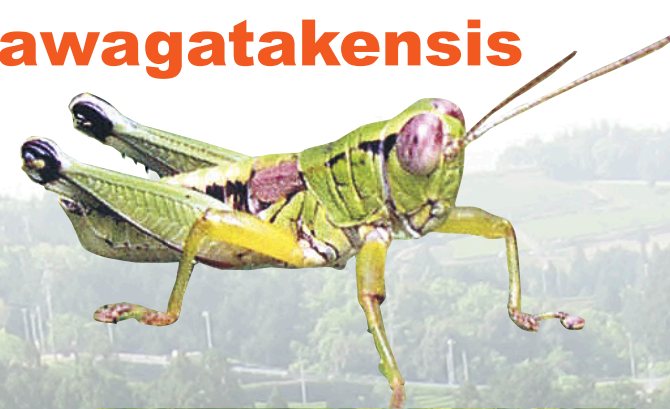
## Bio-diversity based on “Chagusaba” management



Mowing every late autumn has made “Chagusaba” special places, where many kinds of flora and fauna can live. Over 300 species of grassland plants are observed there. And 9 endemic or endangered species are also observed.

### *Pawapodisma awagatakensis*

Japanese Kakegawa-hukibatta named after Awagatake Mountain is endemic species. They have no wing to fly.



### *Euphorbia watanabei*

Japanese Fujitaigeki named after Mt. Fuji is endemic species of Shizuoka prefecture, and designed as Vulnerable species by Japan.



### Effect by adding grass to tea field

- Keep humidity of tea field
- The grass rots and becomes manure
- Prevent soil lost
- Suppress weeding
- Carbon stock
- make tasty tea



### Location

Mountainous and hillock region spreading in the south of southern alps, Shizuoka prefecture, pacific ocean side. Kakegawa City, Kikugawa City, Shimada City, Makinohara City, Kawanehon-cho about 10,000ha of tea field and 300ha of Chagusaba



Traditional farming method  
**The effort to produce tasty tea**

co-existence

**The activity to conserve bio-diversity**  
Many kinds of species living in